

# INTERPRETIVE MAP

FINS/Babine Forest Products  
Fish and Fish Habitat Inventory  
Pierre/Twain  
Mapsheet 093K051  
Map 4 of 4

SCALE 1:20,000

KILOMETRES

Projection: ALBERS EQUAL AREA

PRINTED: May 03, 2001

AML - y:\active\fin\aml\fin\fhinterp99(suppl).aml  
Supplement AML - y:\active\fin\aml\fin\fhinterp99(suppl).aml

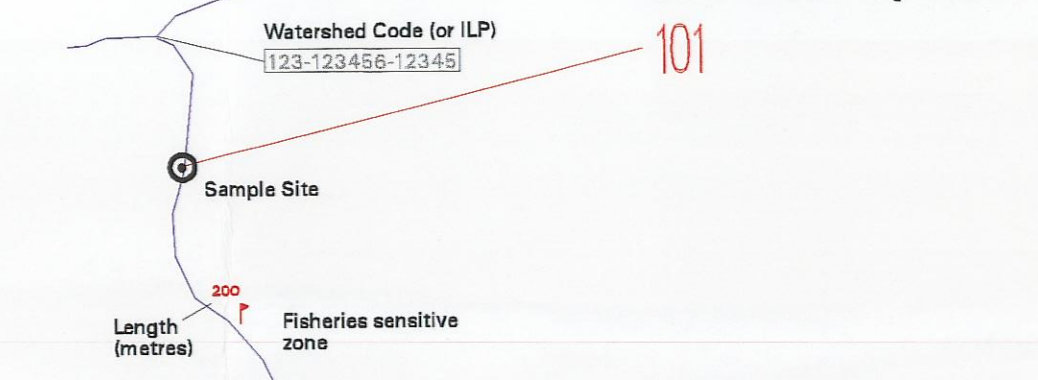
PREPARED BY:

**FINS**  
FISH INVENTORY SPECIALISTS

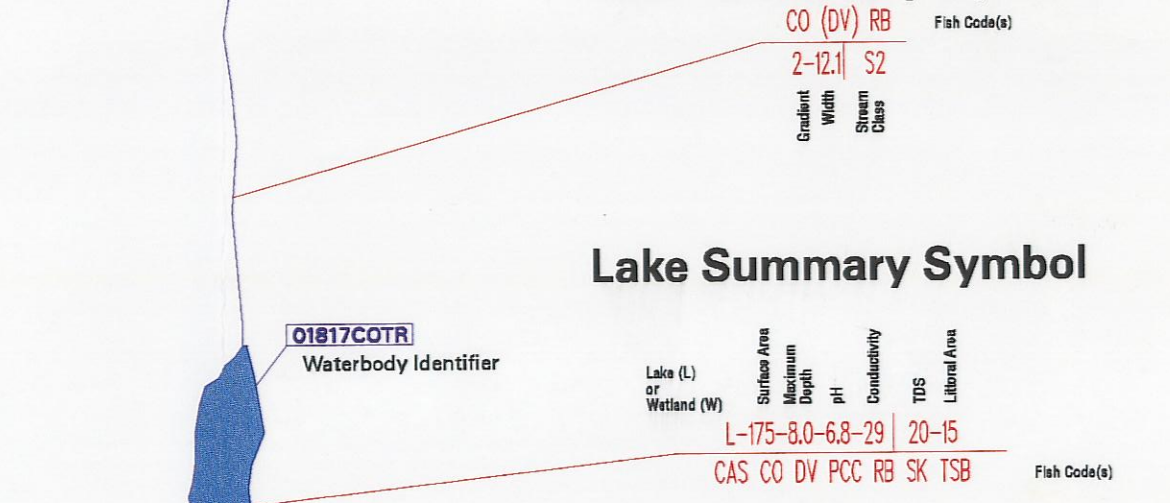
**AMD**  
Digital Imaging

## Stream Information Summary

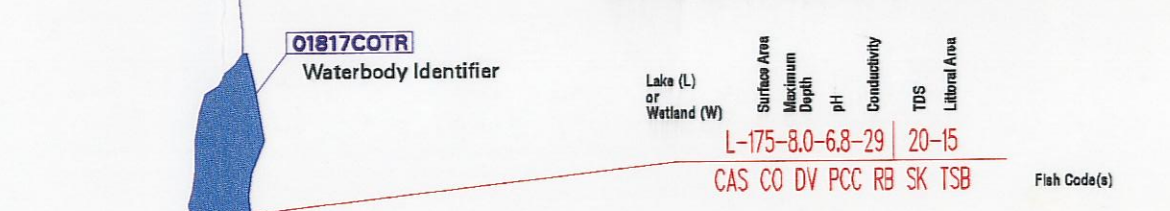
### Site Data Symbol



### Reach Summary Symbol



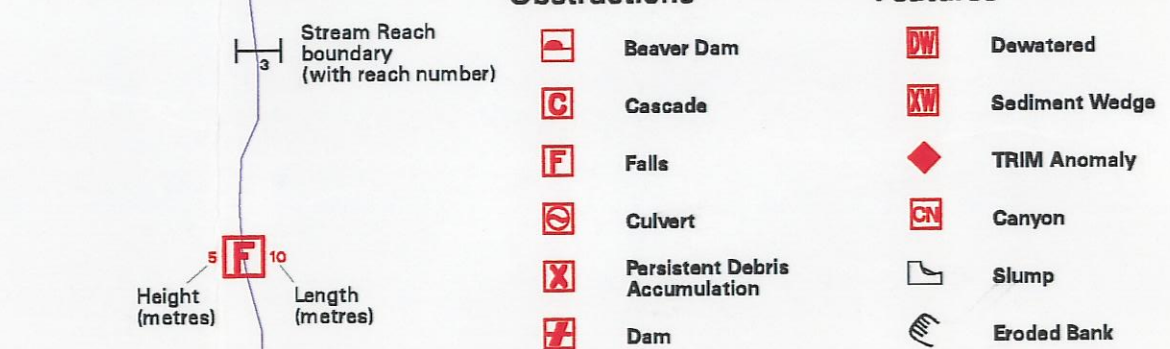
### Lake Summary Symbol



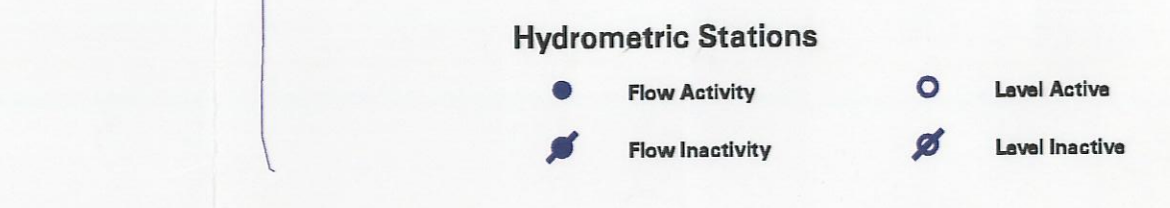
### Enhancement / Management Activities



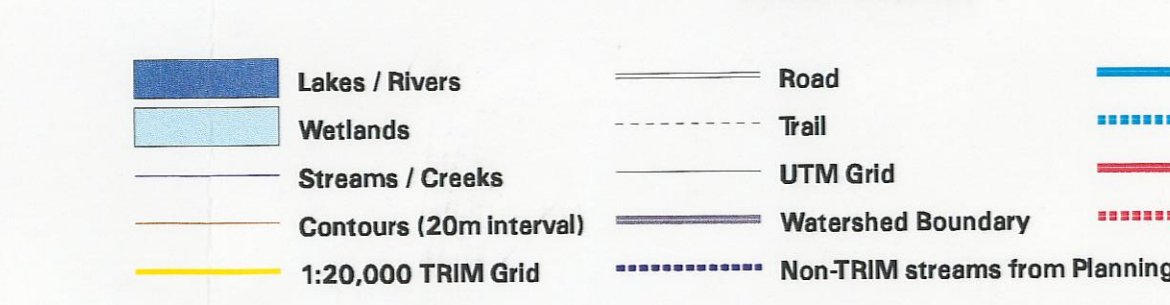
### Obstructions



### Hydrometric Stations



### TRIM Features



## Project Area(s)

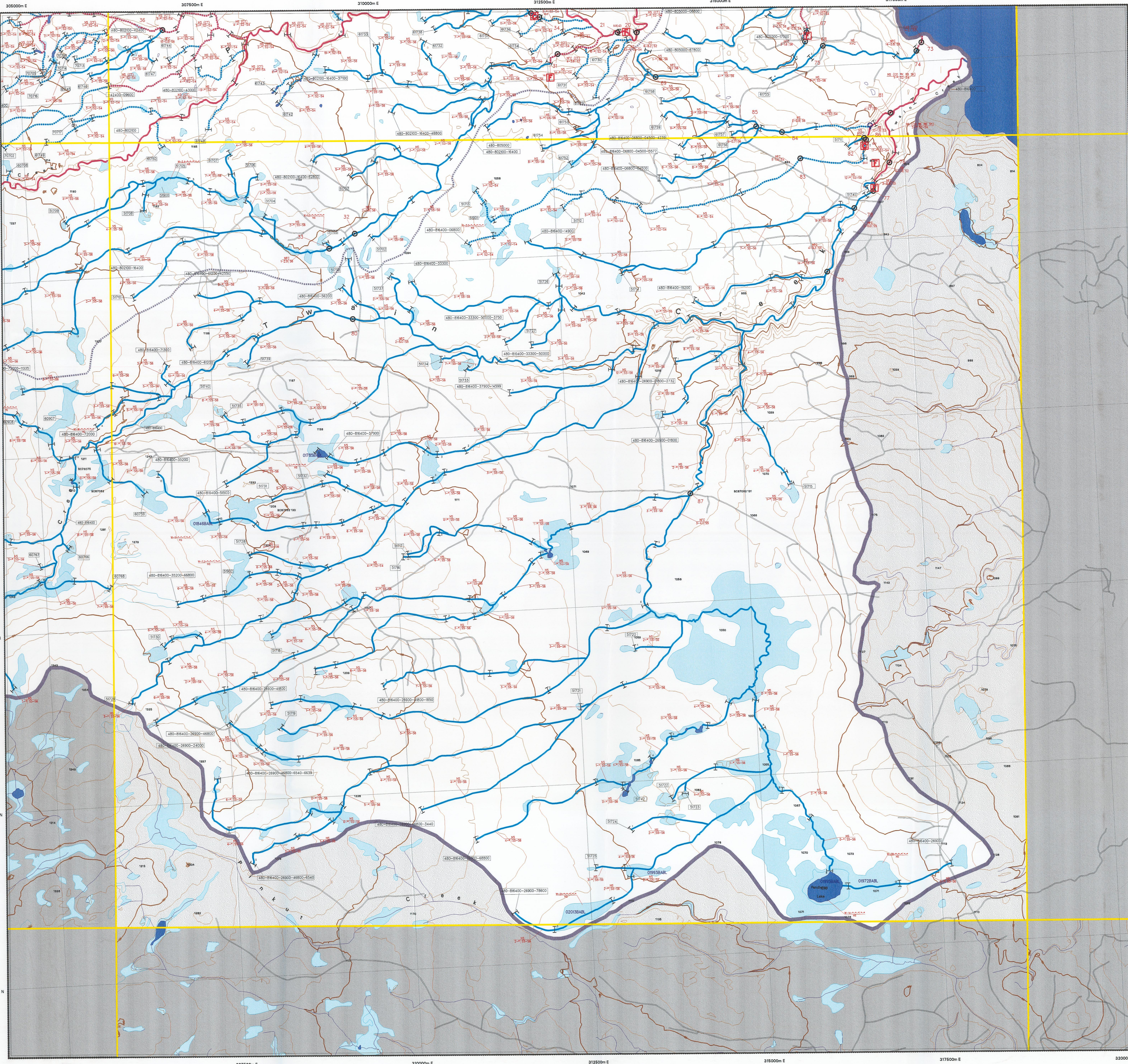


## Source Information

BASE: TR  
LOC: APE  
HAB: INV  
FISH: INVG  
DATE INV: July10 - September 29, 1999  
STR SYM: INV  
LK SYM: INV  
INV MGMT: MELP

MAPPING STANDARDS: B.C. Ministry of Fisheries - "Standards for Fish and Fish Habitat Maps"  
VERSION: 2.0  
DATE: May 1998

MAP ACCURACY IS PLUS OR MINUS 20 METRES



### Fish Species Codes

DVBT	Dolly Varden/Bull Trout	KO	Kokanee	WCT	Westslope Cutthroat Trout
CT	Cutthroat Trout	LKC	Lake Chub	CO	Confined
RB	Rainbow Trout	BB	Burbot	FC	Frequently Confined
TSB	Threespine Stickleback	CAS	Prickly Sculpin	NS	Not Sampled
CAL	Coastrange Sculpin	C	General Minnow	NCD	Non Classified Drainage
PK	Pink Salmon	SK	Sockeye Salmon	NVC	No Visible Channel
SP	Splake	CSU	Largescale Sucker	NFC	No Fish Caught
CCG	Slimy Sculpin	CO	Coho Salmon	SP	Species present, not identified
WF	White Fish General	CC	General Sculpin	I	Presumed fish presence

### Stream Confinement Codes

EN	Entrenched
SU	General Sucker
FC	Frequently Confined
OC	Occasionally Confined
UN	Unconfined
NIA	Not Applicable

### Stream Pattern Codes

ST	Straight
SI	Sinuuous
IR	Irregular, wandering
IM	Irregular, meandering
ME	Regular meander
TM	Tortuous meanders

### Stream Morphology Codes

RP	Riffle Pool
CP	Cascade Pool
SP	Step Pool
LC	Large Channel

### Substrate Codes

F	Fines <2mm
G	Gravels 2-64mm
C	Cobbles 64-256mm
B	Boulders >256mm
R	Rock >4000mm

### Disturbance Indicator Codes

D1	Small woody debris
D2	Large woody debris
D3	Recently formed LWD jams
D4	Homogeneous bed texture
D5	Sediment fingers
D6	Sediment wedges
D7	Extensive bars
D8	Extensively scoured zones
D9	Disturbed Stone Lines

This product has been accepted as being in accordance with approved standards within the limits of Ministry quality assurance procedures. Users are cautioned that interpreted information on this product developed for the purposes of the Forest Practices Code Act and Regulations, for example stream classifications, is subject to review by a statutory decision maker for the purpose of determining whether or not to approve an operational plan.